

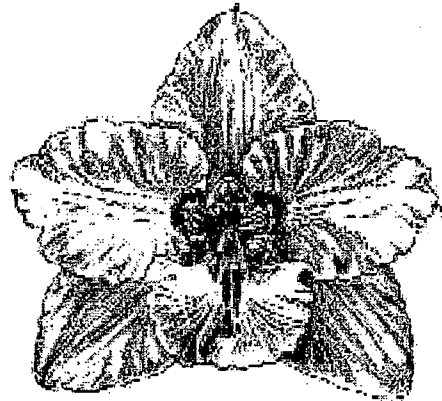
Odontoglossum Alliance Newsletter

Volume 4

February 2004

In This Issue

Odontoglossum Alliance Meeting	Page 1
Request for Auction Material	Page 3
Les Odontoglossums	Page 3
Charlesworth Catalog	Page 4
Color Illustrations	Page 14



Odontoglossum Alliance Meeting 20 February 2004

The notice of the Odontoglossum Alliance Meeting in San Francisco had the **WRONG** date in the November Newsletter. The **CORRECT DATE IS 20 FEBRUARY 2004**. The San Francisco Orchid Show preview party is on Thursday, 19 February 2004 with the show open to the public 20-22 February. The Show Web site is: <http://www.orchidsanfrancisco.com>. The **ODONTOGLOSSUM ALLIANCE MEETING WILL BE HELD FRIDAY, 20 FEBRUARY 2004**.

We have arranged a visit to The Orchid Zone, owned and operated by Terry Root. This is a unique opportunity to visit this well known orchid nursery. Normally visitors are not invited to see the establishment.

Terry has kindly invited a limit of 30 people to tour his nursery and have the opportunity to purchase plant material.

We have engaged a bus which will hold 30 people for this tour. The bus will depart from the Fort Mason Center at 10:00 AM. There will be a person with sign, **ODONT TOUR**, in front of the entrance to Fort Mason and the Orchid Show, for directions to the bus. A box lunch is provided for this tour. We will arrive at the nursery at approximately 12:00 PM. The tour through the nursery will conclude at 3:00 PM. At that time we will bus to San Juan Batista for the balance of the meeting. We will have an auction of donated Alliance material followed by a short talk by Helmut Rohrl. The Alliance has been given Bob Dugger's entire slide collection and some other book material. Helmut will provide a brief description of this material. Following that will be a NO-Host dinner at a local restaurant Jardines, a Mexican restaurant. We will have menus available on the bus. The bus will return to Fort Mason at approximately 8:00 PM.

We have been taking reservations since late December when we sent out a special announcement. The tickets for this tour are \$20.00 per person, if purchased before 1 February 2004 and \$30.00 per person purchased after 1 February. There is a 30 person limit for the tour. After 1 February any tickets not sold will be offered to non-Odontoglossum Alliance members.

To secure a reservation, send your payment and the reservation form below to:

MR. ROBERT HAMILTON
2439 WOOLSEY AVENUE
BERKELEY, CA 94705

E-Mail Address: bob@eecs.berkeley.edu

Request for Auction Material.

The Odontoglossum Alliance meeting and bus tour will have an auction of fine material donated by our members. We are soliciting donations of material for this auction. If you have such material you may bring it with you on the bus. If you are not going on the tour and wish to donate material, you may bring it to The Cow Hollow Motor Inn at 2190 Lombard Street. The material should be left with John Miller who is staying at the Inn. If you are leaving material there it must be left before 9:00 AM on 20 February 2004. If you miss that date and time, but still wish to contribute, meet the bus at the Fort Mason Center before 10:00 AM. Look at the entrance for the person with the sign, ODONT TOUR, standing in front of the show entrance.

We will, in addition to plant material, have at least three (3) of original watercolors of fine Odontoglossums, at least one of which was painted by Nellie Roberts. This will be a wonderful opportunity to obtain a fine bit of Odont history.

Availability of the Léon Duval reprinted book of Les Odontoglossums.

This little book was published in 1900 and in its original state is now quite rare. Your Alliance has reproduced this first published book devoted solely to Odontoglossums. It is reproduced in the original French, and includes an English translation and some biographical material on Duval. We had offered it to our members for the past year. There will be a couple of ads in forth coming issues of the American Orchid Society publication, ORCHIDS, offering this book for sale. If you are interested, you may either respond to that ad or to the notice in prior Odontoglossum Alliance newsletters.

1933-34 Charlesworth Catalog

The generosity of Ben Singer has again become part of our newsletter. Ben has very generously reproduced the 1933-34 catalog of Chalesworth and Company, Ltd. This catalog was a very large publication. This is the second part of the catalog and devoted to Odontoglossums. The first part, devoted to Odontiodas was reproduced in the November 2003 newsletter.

ODONTOGLOSSUM.

Nos.				Each.		
				£	s.	d.
1237	C.	triumphans, aureum .	Good plant with 5 bulbs, 1 lead	2	2	0
1238	I	Uro-Skinneri (Guatemala). Strong plants with 4 and 5 bulbs, well leaved, 1 lead	1	1	0
1239 album .	Nice plant with 3 bulbs, 2 with leaves, 1 lead	4	4	0
1240 Fine variety .	Good plant with 3 bulbs, 2 with leaves, 1 lead	2	2	0
1241	C.	Williamsianum (Costa Rica). Strong plants with 4 to 6 bulbs, well leaved, 1 lead	1	1	0

ODONTOGLOSSUM HYBRIDS.

This splendid genus takes the premier place to-day amongst popular Orchids. Being home-raised, they are constitutionally more robust than the species, and, for that reason, may be freely propagated by division of the bulbs. The variety of colour and their floriferous habit makes them specially useful for choice decoration and first-class floral work.

Our stock is by far the largest in the world; all plants have been raised from the very best "Pedigree Parents," and the choicest varieties in cultivation have emanated from our Nurseries. To economize space we have again been compelled to delete many of the earlier varieties from the body of this Catalogue; at pages 115-116, however, will be found a very comprehensive list, from which we can offer strong, progressive plants at 5s. 0d. and 10s. 6d. each. We shall be happy, also, to quote from this list at per 100, and per 1,000 plants at proportionate reductions.

Nos.				Each.		
				£	s.	d.
1242	Alector	(<i>amabilicity</i> × <i>crispum</i>) Nice plants with 3 and 4 bulbs, well leaved, 1 lead	2	2	0
1243	..	Monarch .	A large handsome variety of perfect shape. Sepals and petals spotted deep red on a porcelain-white ground. Lip broad, having a central blotch of ruby-red with a white margin. Grand plant with 5 bulbs, well leaved, 1 lead	26	5	0
1244	..	perfectum .	A magnificent and perfect-shaped flower. Central portion of sepals and petals densely spotted rosy-mauve, the outer portion white, deeply serrated. Lip flat, spotted with rose and a distinct frilled margin of mauve. Fine plant with 4 bulbs, well leaved, 1 lead	26	5	0
1245	..	serrulatum .	A large well-balanced flower. Sepals and petals deeply serrated, white with a few reddish spots. Lip large, white with a central red blotch. Good plant with 4 bulbs, well leaved, 1 lead	12	12	0
1246	Alorcus	(<i>Llewellyn</i> × <i>crispum</i> , <i>Premier type</i>) A very large flower, fine shape. Sepals, petals and lip white, nicely spotted chestnut-brown, petals well serrated. Strong plant with 5 bulbs, 1 lead	3	3	0
1247	..	Atlas .	An immense well-shaped flower. White ground with a few spots on sepals, with an occasional one on petals, lip large with a distinct yellow basal half, and numerous brown spots on margin. Grand plant with 5 bulbs, well leaved, 1 lead	26	5	0

ODONTOGLOSSUM HYBRIDS.

Nos.			Each.		
			£	s.	d.
1248	Alorcus, Goliath .	F.C.C., R.H.S. An immense flower of perfect shape and substance. Sepals white, blush tinted, roundly-formed petals crisped and fringed at the margin, the tips shaded mauve. All segments have a few prominent red spots, with central red-brown blotch on lip, golden crest and rose-coloured apex. Splendid plant with 4 bulbs, well leaved, 1 lead	78	15	0
1249	Alvara, Rex (Ithone × Clovis) A magnificent large flower of good shape. Sepals and petals violet-purple, shading to mauve at tips. Large lip blotched purple on a white ground, yellow crest. Strong plant with 4 bulbs, 3 with leaves, 1 lead	26	5	0
1250	Amphion (Alvara × Purple Queen) Nice plant with 4 bulbs, 1 lead	2	2	0
1251	Ascania, Canary (Antinous × Georgius Rex) A distinct variety, the whole flower of a bright daffodil-yellow. Nice plant with 6 bulbs, well leaved, 1 lead	5	5	0
1252	.. majesticum ,	A large good-shaped flower. Sepals and petals bronze-yellow, barred with chocolate-brown, lip yellow ground densely spotted chocolate-brown. Nice plant with 5 bulbs, well leaved, 1 lead	7	7	0
1253	Athenia, A.M., R.H.S. (Matador × crispum, Premier type) A handsome hybrid with large round flowers. Sepals and petals white, flushed rose with a few light red markings. Magnificent plant with 4 splendid bulbs, and making a strong new growth	15	15	0
1254	.. Majestic .	A gigantic and perfect-shaped flower, the whole being a chalky-white, with a few medium-sized mauve and brown blotches. Strong plant with 3 bulbs, and making a strong new growth	12	12	0
1255	Belus, A.M., R.H.S. (crispum, Premier type × Marcella) An unusually large hybrid having well-formed flowers. Sepals and petals evenly spotted chocolate-red on a white ground, margin slightly flushed rose. Lip large with a central chestnut-brown blotch and pale yellow crest. Good plant with 4 bulbs, well leaved, 1 lead	26	5	0
1256	.. Colossus :	An enormous flower. Sepals and petals blotched rosy-mauve on a white ground with serrated edges, the large lip has numerous rosy-mauve spots on a white ground. Nice plant with 4 bulbs, well leaved, 1 lead	12	12	0
1257	Benita... (Alvara × Minotaur) Strong plants with 4 and 5 bulbs, 1 lead	2	2	0
1258	Boadicea, aureum (armainvillierense, xanthotes × triumphans, aureum) Good plants with 4 and 5 bulbs, well leaved, 1 lead	2	2	0
1259	Britomartis (Britannia × Purple Emperor) Good plant with 4 bulbs, well leaved, 1 lead	4	4	0
1260	.. radians .	A splendid flower. Sepals and petals rosy-purple clouded with violet, and white margins. Lip large with a central crimson blotch and white margin. Good plant with 5 bulbs, well leaved, 1 lead	12	12	0
1261	Calliope (Fabia × Rosina) Good plants with 4 and 5 bulbs, well leaved, 1 lead	1	11	6

ODONTOGLOSSUM HYBRIDS.

		Each.		
		£	s.	d.
Nos.				
1262	Camilla, The Sirdar (Penelope × Georgius Rex) A medium-sized and splendid-shaped flower. Sepals and petals chestnut-red, shading brown at tips. Lip blotched red on a white ground. Strong plant with 4 bulbs, well leaved, 1 lead 10 10 0			
1263	Cassius (Doreen × Our Prince) Good plants with 4 and 5 bulbs, well leaved, 1 lead 2 2 0			
1264	Catherine (eximium × harvengtense) Strong plants with 5 and 6 bulbs, well leaved, 1 lead 2 2 0			
1265	Celeus. albo-aurea (xanthinum × harvengtense) A medium-sized flower. Sepals and petals blotched golden-yellow on a white ground. Lip primrose-yellow with a central orange-yellow blotch. Good plant with 5 bulbs, well leaved, 1 lead 5 5 0			
1266	Cetus, Alpha (Gorizia × Britannia) A splendid-shaped flower of violet-magenta colour. Sepals and petals having a white margin with bars of white at tips. Lip large with a central blotch of deep magenta, and a frill of mauve and white. Good plant with 4 bulbs, well leaved, 1 lead 21 0 0			
1267	Clomond (Clonius × Regium) Nice plants with 4 and 5 bulbs, well leaved, 1 lead 2 12 6			
1268	„ Acis . A splendid variety of good shape. Sepals and petals deep claret-red with white tips. Lip solid garnet-red having a distinct white margin. Strong plant with 5 bulbs, well leaved, 1 lead 10 10 0			
1269	Clonius, Regina (Aquitania × The Czar) An attractive variety. Sepals and petals solid rich mahogany-red shading to violet. Lip has a central area of garnet-red with a white margin. Good plant with 4 bulbs, well leaved, 1 lead 15 15 0			
1270	„ Rex . A large flower of splendid texture. Sepals and petals broad, solid rosy-purple, lip similar colour with a distinct white serration. Strong plant with 4 fine bulbs, well leaved, 1 lead 31 10 0			
1271	Coreen (Orobis × crispo-Solon) Strong plants with 4 and 5 bulbs, well leaved, 1 lead 2 2 0			
1272	crispo-Solon (crispum × Solon) Good plant with 5 bulbs, well leaved, 1 lead 3 3 0			
1273	„ Plato . A splendid large fine-shaped flower. Sepals, petals and lip spotted chestnut-red on a white ground. Good plant with 4 bulbs, well leaved, 1 lead 10 10 0			
1274	„ Ruby . A superb flower of perfect shape. Sepals solid ruby-red and a white margin, petals blotched rosy-purple with mauve tips. Lip white having a central ruby blotch and a yellow disc. Good plant with 3 bulbs, well leaved, and making a strong new growth 15 15 0			
1275	crispworth, excelsum (Exworth × crispum) A large shapely flower. Sepals, petals and lip spotted mahogany-red on a white ground. Splendid plant with 5 bulbs, well leaved, 1 lead 12 12 0			
1276	Decius... .. (Verulamium × crispo-Solon) Strong plants with 5 and 6 bulbs, well leaved, 1 lead 2 2 0			

ODONTOGLOSSUM HYBRIDS.

Nos.			Each.		
			£	s.	d.
1277	Diophon	... (Omega × Purple Emperor) Good plants with 4 and 5 bulbs, well leaved, 1 lead ...	3	3	0
1278	Dusky Emperor. A.M., R.H.S.	... (l'Empereur × Dusky Monarch) A splendid flower of good shape. Sepals chocolate-crimson, petals rosy-purple with a metallic sheen and white serrated margins. Lip glossy chocolate-crimson, edged with white and having a yellow crest. Splendid plant with 5 bulbs, well leaved, and 1 lead ...	21	0	0
1279	Duviverianum (Natural hybrid)	... (maculatum × nebulosum) Nice plants with 4 to 6 bulbs, 1 lead ...	2	2	0
1280	Eudora, rubrum	... (Dictune × Serapis) A splendid variety of good shape, the whole flower ruby-red with a white margin. Strong plant with 4 bulbs, well leaved, 1 lead ...	15	15	0
1281	„ Sultana.	A fine-shaped variety of exceptional merit, the whole flower rich chestnut-red with white serrated petals and lip. Good plant with 4 bulbs, well leaved, 1 lead ...	21	0	0
1282	Eugenia	... (Gwenifer × Dictune) Nice plants with 4 and 5 bulbs, well leaved, 1 lead ...	1	11	6
1283	excella	... (eximillus × crispum, Priscilla) Good plants with 4 and 5 bulbs, well leaved, 1 lead ...	2	2	0
1284	eximium, xanthotes	(armainvillierense, xanthotes × crispum, xanthotes, Charlesworthii) Strong healthy plants with 3 to 5 well-leaved bulbs, 1 of which is a lead ...	10	6	
1285	„ „	Stronger plants with 5 and 6 bulbs, well leaved, 1 lead ...	1	1	0
1286	Ferentum	... (regium × Purple Emperor) Strong plants with 4 and 5 bulbs, well leaved, 1 lead ...	2	2	0
1287	fuscum	... (sceptrum × Wilckeanum) Good plants with 5 and 6 bulbs, well leaved, 1 lead ...	2	2	0
1288	Gillian	... (Purple Emperor × Gwenifer) Strong plants with 4 and 5 bulbs, well leaved, 1 lead ...	3	3	0
1289	Gloden	... (crispum × Alvara) Strong plants with 4 and 5 bulbs, well leaved, 1 lead ...	2	12	6
1290	Goldstar	... (Cumbe × hellemense) Strong plants with 4 and 5 bulbs, well leaved, 1 lead ...	3	3	0
1291	„ Orb.	Flower medium-size, sepals and petals daffodil-yellow shading bronze at edges, lip primrose-yellow. Splendid plant with 4 bulbs, well leaved, 1 lead ...	15	15	0
1292	Hermes	... (Serapis × St. James) Nice plants with 4 and 5 bulbs, well leaved, 1 lead ...	3	3	0
1293	„ A.M., R.H.S.	A handsome variety, sepals and petals rich cherry-red with fringed edges of blush-white. Lip brownish-crimson with a golden-yellow crest and narrow white margin (see painting). Good plant with 4 bulbs, well leaved, 1 lead ...	26	5	0

ODONTOGLOSSUM HYBRIDS.

Nos.						Each.		
						£	s.	d.
1294	Imperator	(<i>Britannia</i> × <i>The Czar</i>)					
		A splendid hybrid, large and fine-shaped flowers. Sepals, petals and lip violet-purple with white serrated margins. Grand plant with 4 bulbs, well leaved, 1 lead...				7	7	0
1295	..	<i>majesticum</i> . A handsome variety of outstanding merit. Sepals and petals rich petunia-purple with white margin. Lip large and open with rosy-purple central blotch, and a broad white margin. Good plant with 5 bulbs, well leaved, 1 lead ...				21	0	0
1296	Joanne	(<i>Alvara</i> × <i>Ovidius</i>)					
		Good plants with 4 and 5 bulbs, well leaved, 1 lead ...				2	2	0
1297	King Albert	(<i>Armstrongia</i> × <i>crispum</i> , <i>Luciani</i>)					
		A very distinct variety of good shape and size, the whole flower being of a rich buff-orange on a creamy-white ground. Lip has a central blotch of orange-yellow, with a deep margin of creamy-white. Grand plant with 4 bulbs, well leaved, 1 lead ...				15	15	0
1298	Llewellyn, <i>planilabris</i>	(<i>amabile</i> × <i>Georgius Rex</i>)					
		A gigantic flower of good shape. Sepals and petals densely spotted rosy-violet on a white ground. Lip exceptionally large, white, spotted purple. Strong plant with 4 bulbs, well leaved, 1 lead ...				10	10	0
1299	<i>luteolum</i>	(<i>Syrinx</i> × <i>crispum</i>)					
		Strong plants with 4 and 5 bulbs, well leaved, 1 lead ...				1	11	6
1300	Mandura	(<i>Isolene</i> × <i>crispum</i>)					
		Strong plants with 4 and 5 bulbs, well leaved, 1 lead ...				2	2	0
1301	Mandalum	(<i>Orobis</i> × <i>crispum</i>)					
		Good plants with 4 and 5 bulbs, well leaved, 1 lead ...				1	11	6
1302	..	<i>Picotee</i> . An immense flower of perfect shape. Sepals and petals spotted and blotched old-rose on a white ground, with a distinctive margin of mauve on the petals. Lip broad having a chestnut-red blotch and yellow crest. Strong plant with 4 bulbs, well leaved, 1 lead ...				15	15	0
1303	Manto...	(<i>crispum</i> × <i>Radiant</i>)					
		Strong plants with 4 and 5 bulbs, well leaved, 1 lead ...				3	3	0
1304	..	<i>Radiant</i> . A flower of large proportions. Sepals and petals broad with old-rose blotches and a white margin. Basal half of lip white with a yellow crest. Good plant with 5 bulbs, well leaved, 1 lead ...				10	10	0
1305	Marcella, <i>Orb</i>	(<i>ardentissimum</i> , <i>Pintadeau</i> × <i>The Czar</i>)					
		A shapely flower, sepals and petals solid chestnut-red with a white margin. Lip large, of similar colour with white frilled edge. Good plant with 4 bulbs, well leaved, 1 lead ...				12	12	0
1306	Matador, <i>Apollo</i>	(<i>ardentissimum</i> , <i>Pintadeau</i> × <i>Georgius Rex</i>)					
		A large variety of good shape. Sepals and petals rosy-purple on a white ground with mauve margin. Lip broad, blotched garnet-red in centre with white edges. Splendid plant with 5 bulbs, well leaved, 1 lead ...				7	7	0
1307	Melanie	(<i>Clonius</i> × <i>Clydonia</i>)					
		Strong plants with 4 and 5 bulbs, well leaved, 1 lead ...				3	3	0

ODONTOGLOSSUM HYBRIDS.

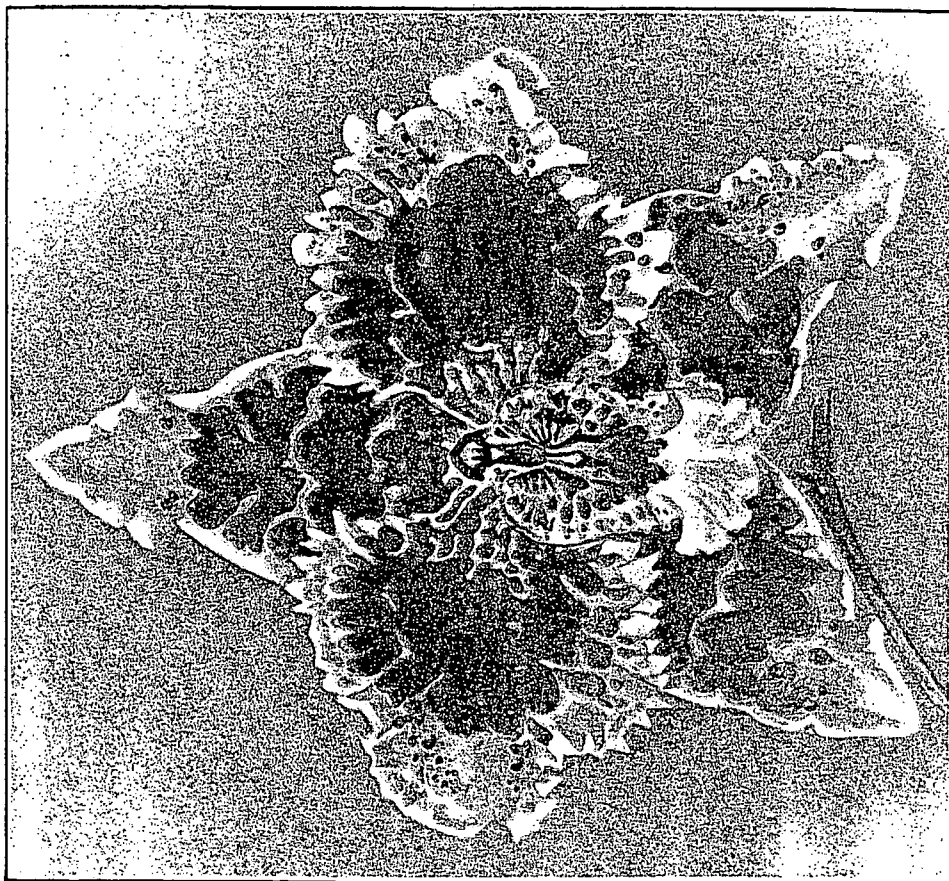
Nos.			Each.		
			£	s.	d.
1308	Memphis (<i>promerens</i> × <i>Ovidius</i>) Good plants with 4 and 5 bulbs, well leaved, 1 lead	1	1	0
1309	Mercutans, <i>perfectum</i>	A.M., R.H.S. (<i>Rosina</i> × <i>crispo-Solon</i>) A handsome variety of good shape. Sepals and petals rich crimson margined and tipped blush-white. Lip garnet-red with a white edge. Splendid plant with 4 fine bulbs, well leaved and making a strong growth	15	15	0
1310	Merulum	A.M., M.O.S. (<i>Fascinator</i> × <i>Britannia</i>) A medium flower of fine shape. Sepals, petals and lip blotched chestnut-red, on a white ground. Strong plant with 5 bulbs, well leaved, 1 lead	5	5	0
1311	.. Sepoy	A distinct variety. Sepals and petals heavily spotted garnet-red on a white ground. Lip similar colour with a white serrated margin. Good plant with 4 bulbs, well leaved, and making a strong new growth	7	7	0
1312	Minotaur, <i>Ornatum</i>	A.M., R.H.S. (<i>Cordoba</i> × <i>Clovis</i>) A beautiful large flower. Sepals and petals bright violet-purple with blush-rose margin. Lip broad, purplish-magenta with white edge. Splendid plant with 4 bulbs, well leaved, 1 lead	15	15	0
1313	<i>mirum, aureum</i> (<i>Wilckeanum, aureum</i> × <i>crispum, xanthotes</i>) Good plants with 5 bulbs, well leaved, 1 lead	2	2	0
1314	<i>nigratum</i> (<i>Serapis</i> × <i>Clonius</i>) Strong plants with 4 and 5 bulbs, well leaved, 1 lead	2	2	0
1315	Norman, <i>Argus</i> (<i>Aglaon</i> × <i>Georgius Rex</i>) A very distinct variety. Sepals and petals have numerous irregular violet-purple blotches on a white ground, lip has one central purple blotch with white margin. Strong plant with 4 bulbs, well-leaved, 1 lead... ..	10	10	0
1316	Omega, <i>perfecta</i> (<i>Aglaon, majesticum</i> × <i>St. James</i>) An attractive variety. Sepals and petals heavily blotched violet-purple with a broad margin of white. Lip blotched rosy-purple on a white ground. Strong plant with 5 bulbs, well leaved, 1 lead	15	15	0
1317	Oricum, <i>Beta</i> (<i>crispo-Solon</i> × <i>Trident</i>) A flower of noble proportions and splendid shape. Sepals and petals solid chestnut-red slightly broken at tips, and white margin. Lip large with a central blotch of dark red, on a white ground. Good plant with 4 bulbs, well leaved, 1 lead	36	15	0
1318	Otto Jeidels (<i>St. James</i> × <i>Clovis</i>) Good plants with 4 and 5 bulbs, well leaved, 1 lead	2	2	0
1319	Ovidius, <i>perfectum</i> (<i>Felicity</i> × <i>St. James</i>) A magnificent flower, good size and shape. Sepals and petals violet-purple with mauve tips. Lip flat, purple with white margin. Splendid plant with 4 bulbs, well leaved, 1 lead	26	5	0
1320	Palmyras Queen (<i>Purple Queen</i> × <i>St. James</i>) Good plants with 4 and 5 bulbs, well leaved, 1 lead	4	4	0

ODONTOGLOSSUM HYBRIDS.

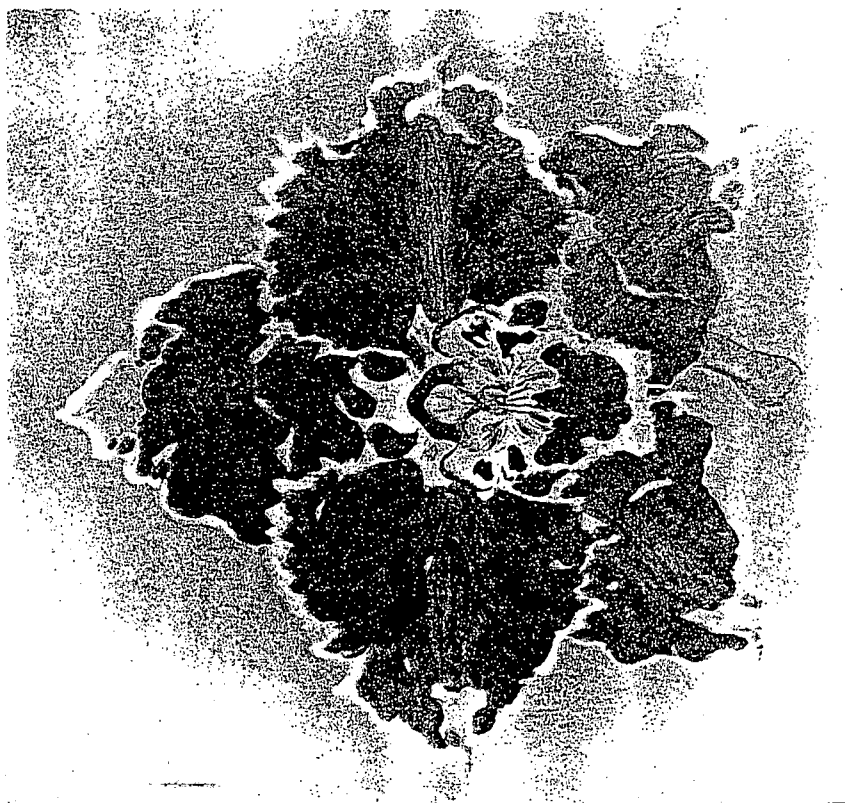
Nos.			Each.		
			£	s.	d.
1321	Palmyras Queen, Radiant .	A superb variety. Sepals and petals solid petunia-purple with a white margin. Lip ruby-red with a white edge. Strong plant with 6 bulbs, well leaved, 1 lead	12	12	0
1322	Pandarus, Mauve Queen (Rosina × regium) A large well-shaped flower. Sepals, petals and lip violet-mauve, with a serrated white margin. Strong plant with 5 bulbs, well leaved, 1 lead	8	8	0
1323	Petulum (Toreador × crispum) Good plants with 4 and 5 bulbs, well leaved, 1 lead	2	2	0
1324	.. distinction .	A large splendid-shaped flower. Sepals and petals spotted mahogany-brown on a white ground, lip having a large mauve central blotch, with numerous smaller ones on margin. Strong plant with 4 bulbs, well leaved, 1 lead	7	7	0
1325	Philene (Regium × Clydonia) Nice plants with 4 and 5 bulbs, well leaved, 1 lead	2	2	0
1326	.. violaceum .	A splendid variety of good size and shape. Sepals and petals solid violet-purple with a white margin. Lower portion of lip white, purple crest. Nice plant with 4 bulbs, well leaved, 1 lead	7	7	0
1327	President Poincaré. F.C.C., R.H.S. (parentage unrecorded) A renowned hybrid of splendid size and shape. Sepals and petals rosy-purple, with distinct pale lilac blotches on tips. Lip broad, white ground, with deep purple blotches, distinct yellow crest. Splendid plant with 3 bulbs, well leaved, 1 lead	21	0	0
1328	Purple Emperor (The Czar × Dusky Monarch) A variety of outstanding merit, approaching in quality the renowned F.C.C. variety. The large shapely flower having sepals and petals of a rich violet-purple, with a narrow white margin. Lip has a central purple area, with a rosy-white margin. Nice plant with 4 bulbs, 3 of which have leaves, 1 is a lead	26	5	0
1329	Rialto. A.M., R.H.S. (Wilckeanum × citrinum) A distinct and charming flower of very firm texture. Sepals and petals white, with rich orange-yellow central blotch, lip white with orange-yellow central zone. Strong plant with 4 bulbs, and making a vigorous new growth	26	5	0
1330	.. Golden Ray .	An attractive variety of good shape. Sepals, petals and lip spotted orange-yellow on a primrose-yellow ground. Lip large with a central blotch of buttercup-yellow. Good plant with 4 bulbs, well leaved, 1 lead	10	10	0
1331	Royal Ascot. A.M., R.H.S. (Felicity × Georgius Rex) A handsome hybrid of much substance. Sepals and petals chestnut-red with overlay of violet-purple, white margin with lilac-mauve spots. Lip broad, blotched chestnut-red, with a white margin. Splendid plant with 5 bulbs, well leaved, 1 lead	21	0	0

ODONTOGLOSSUM HYBRIDS.

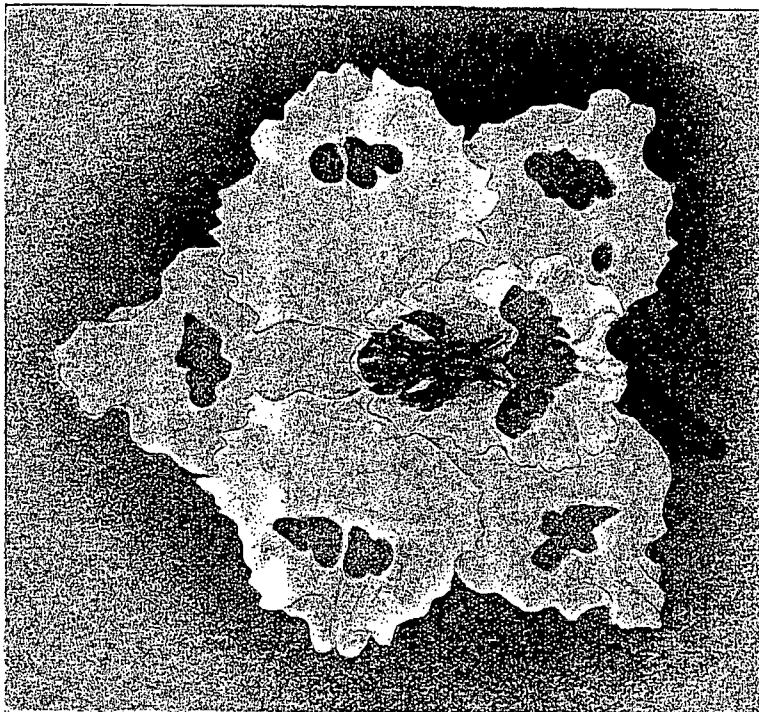
Nos.			Each.		
			£	s.	d.
1332	St. Hilda.	A.M., R.H.S. (<i>eximium</i> × <i>crispo-Solon</i>) A large attractive flower of good shape. Sepals and petals blotched ruby-purple, tipped rose on a white ground. Lip broad, basal half with central chocolate-red markings. Strong plant with 4 bulbs, well leaved, 1 lead	21	0	0
1333	St. James.	F.C.C., R.H.S. (<i>amabile</i> × <i>Amethyst</i>) A noble Odontoglossum. Sepals and petals violet-mauve with broad white margin and tips (see painting). Good plant with 4 bulbs, well leaved, 1 lead	10	10	0
1334	Sea Foam (<i>Britannia</i> × <i>Thetis</i>) Strong plants with 4 and 5 bulbs, well leaved, 1 lead	1	11	6
1335	Spreakley (<i>Georgius Rex</i> × <i>promerens</i>) Good plants with 4 and 5 bulbs, well leaved, 1 lead	1	1	0
1336	Toreador (<i>Laurentia</i> × <i>crispum</i> , <i>Linda</i>) Strong plants with 5 and 6 bulbs, well leaved, 1 lead	1	1	0
1337	..	grandis. A magnificent variety of perfect form and size. Sepals and petals spotted deep rose on a light mauve ground. Lip white, blotched purple. Splendid plant with 4 bulbs, and making a strong new growth	15	15	0
1338	..	The Don. A grand flower of good shape. Sepals blotched chestnut-red on a rosy ground, petals thickly spotted garnet-red. Lip white with a purple blotch in centre. Strong plant with 4 bulbs, well leaved, and making a strong new growth	10	10	0
1339	Trident, rubrum.	A.M., R.H.S. (<i>eximium</i> × <i>King Albert</i>) A shapely and fine coloured Odontoglossum. Sepals and petals bright chocolate-red with purple-mauve markings on the blush tips, lip white, with broken central area deep brown, and golden crest (see painting). Good plant with 5 bulbs, well leaved, 1 lead	5	5	0
1340	Troyte (<i>Dora</i> × <i>crispo-Solon</i>) Good plants with 4 bulbs, well leaved, 1 lead	1	1	0
1341	Waterloo (<i>Parentage unrecorded</i>) An exceptionally fine hybrid, large and good shape, the broad sepals and petals violet-purple, shading mauve at tips. Lip similar colour with a white tip. Good plant with 4 bulbs, well leaved, 1 lead	36	15	0
1342	Witan... (<i>Regium</i> × <i>Thetis</i>) Strong plants with 4 and 5 bulbs, well leaved, 1 lead	1	11	6
1343	xanthinum, Argus	(<i>armainvillierense</i> , <i>xanthotes</i> × <i>luteo-purpureum</i> , <i>Vuylstekeanum</i>) A large flower of medium shape. Sepals and petals pale yellow, with large orange-yellow blotches, lip white ground with a central orange-yellow blotch. Good plant with 6 bulbs, well leaved, 1 lead	6	6	0
1344	Yolandum, Peacock (<i>Princess Yolando</i> × <i>crispum</i>) A fascinating variety of medium size. Sepals and petals distinctly marked garnet-red on a pale rose ground. Lip broad, spotted chestnut-red with white margin. Strong plant with 4 bulbs, well leaved, 1 lead	10	10	0



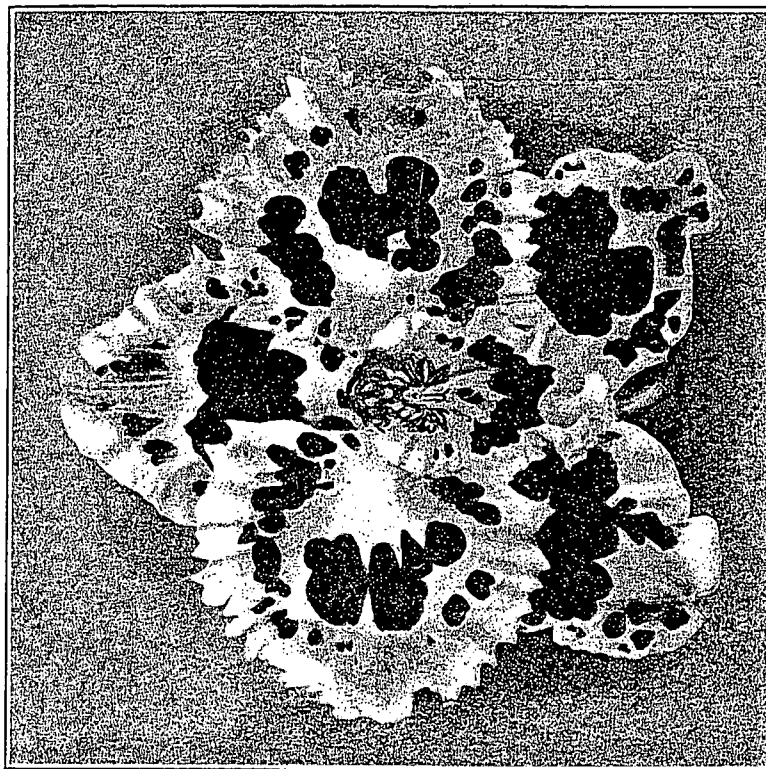
Odontoglossum Alector, Var. *perfectum*.



ODONTOGLOSSUM DUSKY EMPEROR.
A.M., R.H.S.



Odontoglossum Rialto.
A.M., R.H.S.



Odontoglossum Toreador.



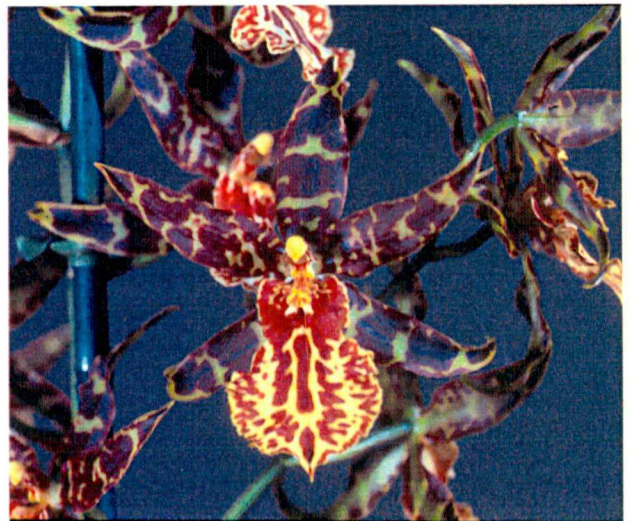
Legerara Belle Glade



Legerara Bahamas



Legerara Roman Emperor



McLellanara Leopard



Odontonia Papageno



Odontonia Susan Bogdanov



Odontonia Yellow Parade



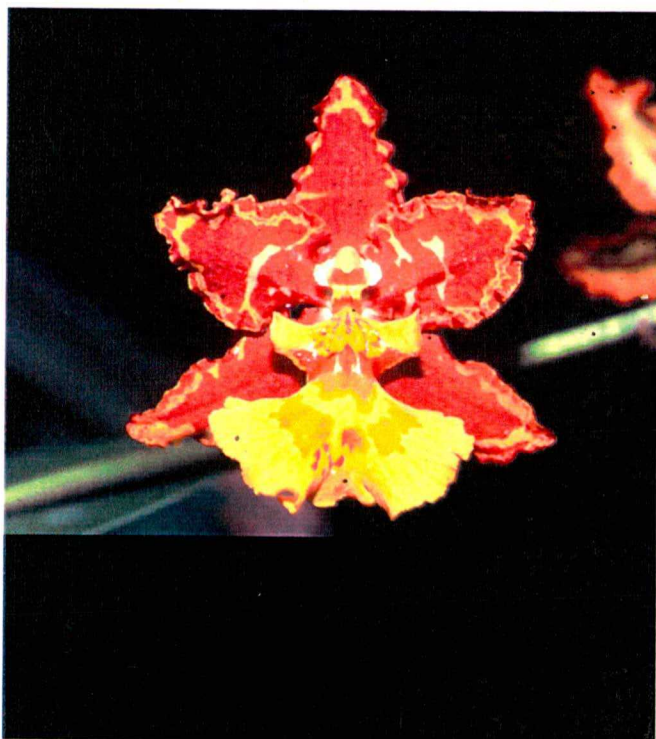
Vuylstekeara Hanna Friedland



Vuylstekeara Shirley Pozzato



Wilsonara Calico Gem



Wilsonara Isler's Gem



Wilsonara Julie Notley